

How Do you Use a Gun Applicator to Apply a Two Part Epoxy?



BENEFITS OF USING A GUN APPLICATOR

Using a gun applicator for adhesives ensures precision mixing and improves ease of use. It allows for consistent dispensing by providing better control over adhesive flow making it a useful option for use in industrial applications.

Gun applicators can be used to apply epoxy systems with mix ratios of 1:1, 2:1, 4:1 or 10:1.

Continue reading for a step-by-step instructional guide on getting started with your gun applicator.

How Do you Use a Gun Applicator to Apply a Two Part Epoxy?

1 ASSEMBLE THE GUN APPLICATOR

STEP 1

UNBOX THE APPLICATOR

Open the box and remove the plunger and handle



STEP 2

IDENTIFY THE PLUNGER

Ensure that the plunger matches the corresponding openings of the applicator gun



STEP 3

INSERT THE PLUNGER

While holding up the lever on the back of the gun, insert the plunger through the front opening and pull tight to ensure it is fully inserted



STEP 4

LOAD THE CARTRIDGE

While holding up the lever on the back of the gun, insert the plunger through the front opening and pull tight to ensure it is fully inserted

Push down the closure to secure it in place



STEP 5

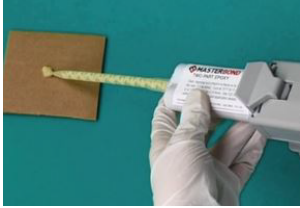
ATTACH THE MIXING NOZZLE

Unscrew the cap from the adhesive cartridge

Screw on the static mixing nozzle



2 MATERIAL APPLICATION



STEP 1

DISPENSE SMALL AMOUNT OF ADHESIVE

Start by discarding a small amount of adhesive (1-2 ml)



STEP 2

APPLY MATERIAL

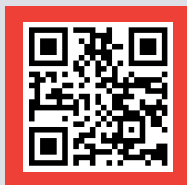
The applicator is ready for use - gently squeeze the trigger to apply the adhesive, ensuring an even and controlled flow



3 STORAGE

STEP 1

Once finished, remove the cartridge, screw on the cap and store in an upright position



**Prefer to watch a
step by step video?**

Scan for a demonstration on how to
assemble a gun applicator and apply
your two part epoxy